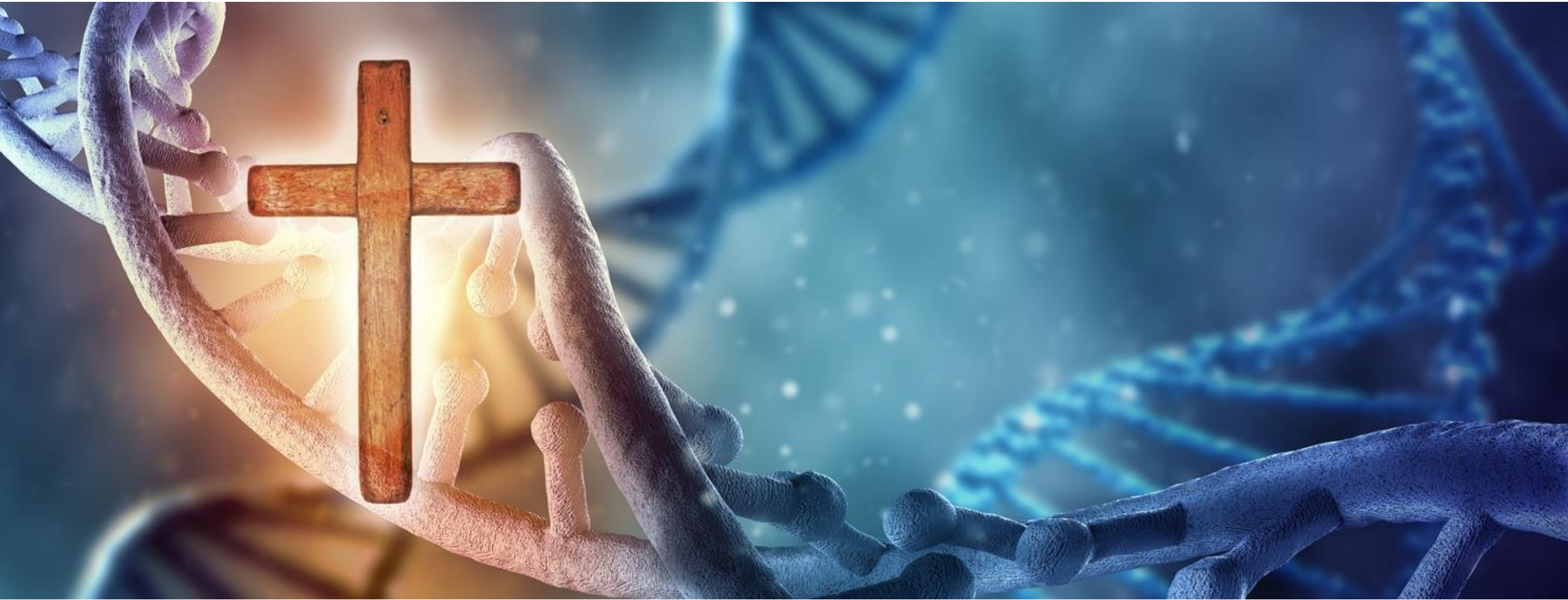


Gospel DNA

Replicating Effective Ministry



EFFECTIVEMINISTRY

Workshop 1 - Multisite churches

Scott Sanders

**GENEVA
PUSH >>**

MULTISITE

WHAT IS A MULTISITE CHURCH?

GENEVA
PUSH >>

One church that has two or more locations with a shared leadership, budget, vision, and board.

MULTISITE

WHAT IS A MULTISITE CHURCH?

Multisite Model	Definition
Video-Venue Model	Creating one or more on-campus environments that use video-cast sermons (live or recorded), often varying the worship style.
Regional-Campus Model	Replicating the experience of the original campus at additional campuses in order to make church more accessible to other geographic communities.
Teaching-Team Model	Leveraging a strong teaching team across multiple locations at the original campus or an off-site campus.

Source: Scott McConnell, Multi-site Churches

MULTISITE

WHEN DOES MULTI-SITE MAKE SENSE?

1. Focus on the Great Commission
2. Have a culture of multiplication
3. Are willing to remove barriers to reach more people
4. Are willing to seize the opportunity

GENEVA
PUSH >>

MULTISITE

WHEN DOES MULTI-SITE NOT MAKE SENSE?

1. Are trying to create growth
2. Are not healthy
3. Have wrong motives

GENEVA
PUSH >>

NOTE: In US very few churches have over 3 sites

MULTISITE

HOW DO CHURCH PLANTS DIFFER FROM MULTISITE CHURCH?

- 1. Geography:** The idea is to relocate members to a new campus to create space in the mother church and provide a more local gospel presence.
- 2. Gifting:** a person better suited to a campus pastor role into a leadership role in a church plant can be stressful and unproductive.
- 3. Governance:** Need a high level of agreed central control that is clearly laid out from the outset.

MULTISITE

MULTI-SITE vs CHURCH PLANT

MULTISITE

Control

Consistency

Attractional

Standardized

Retain (resources, volunteers)

Addition

Centralised

Personality driven

CHURCH PLANT

Autonomy

Contextualization

Missional

Organic

Release (members, resources)

Multiplication

Decentralised

Mission driven

MULTISITE

WHAT IS THE KEY ELEMENT FOR MULTISITE?

An understanding of who your church is and what matters.

- Leaders must be honest about who their church is, so they know what to replicate
- Leaders must get beyond analogies (e.g., DNA)
- New sites must prioritize and invest in the programs/activities that matter most and not try to offer everything

MULTISITE

What pieces need to come together to launch a site?

1. **Unanimity** among leaders
2. A **leader** for the new site
3. A **core group** of leaders to lead the core ministries at the new site
4. A **group of people** that your church to reach
5. **Systems and structures** in place
6. Sufficient **finances**

MULTISITE

Apply this understanding to key decisions

1. What level of autonomy at sites?
2. Who oversees multi-site?
3. How will you deliver the message?
4. What core ministries will you offer?

MULTISITE

What does leadership look like in a multisite church?

Any pastor has three primary roles:

- teacher,
- shepherd and
- leader

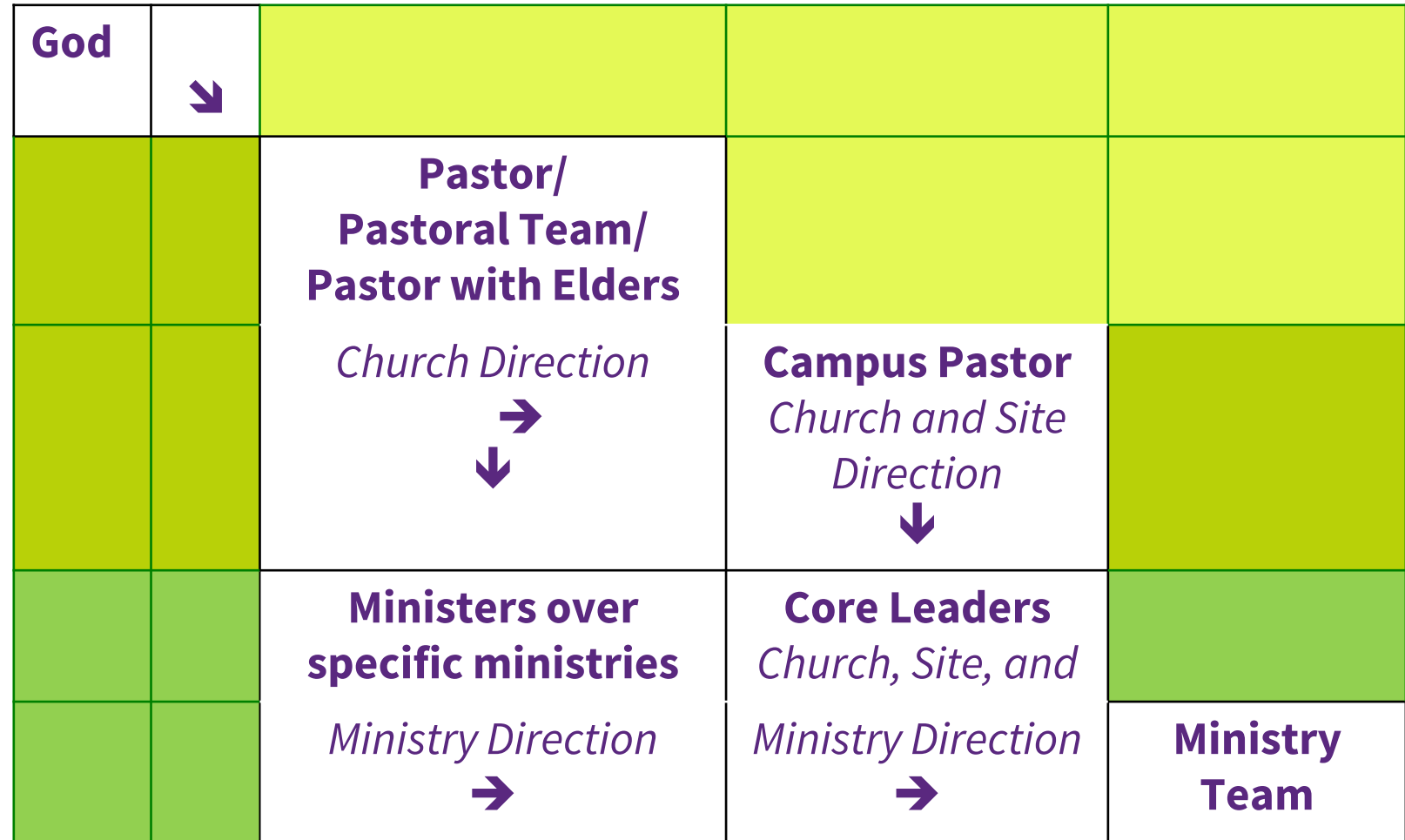
The campus pastor's roles are shepherd and leader

Shepherding – drawing people in with care

Leadership – sending people out as an extension of the church's senior leadership

MULTISITE

The leadership flow



Source: Scott McConnell, Multi-site Churches, 92

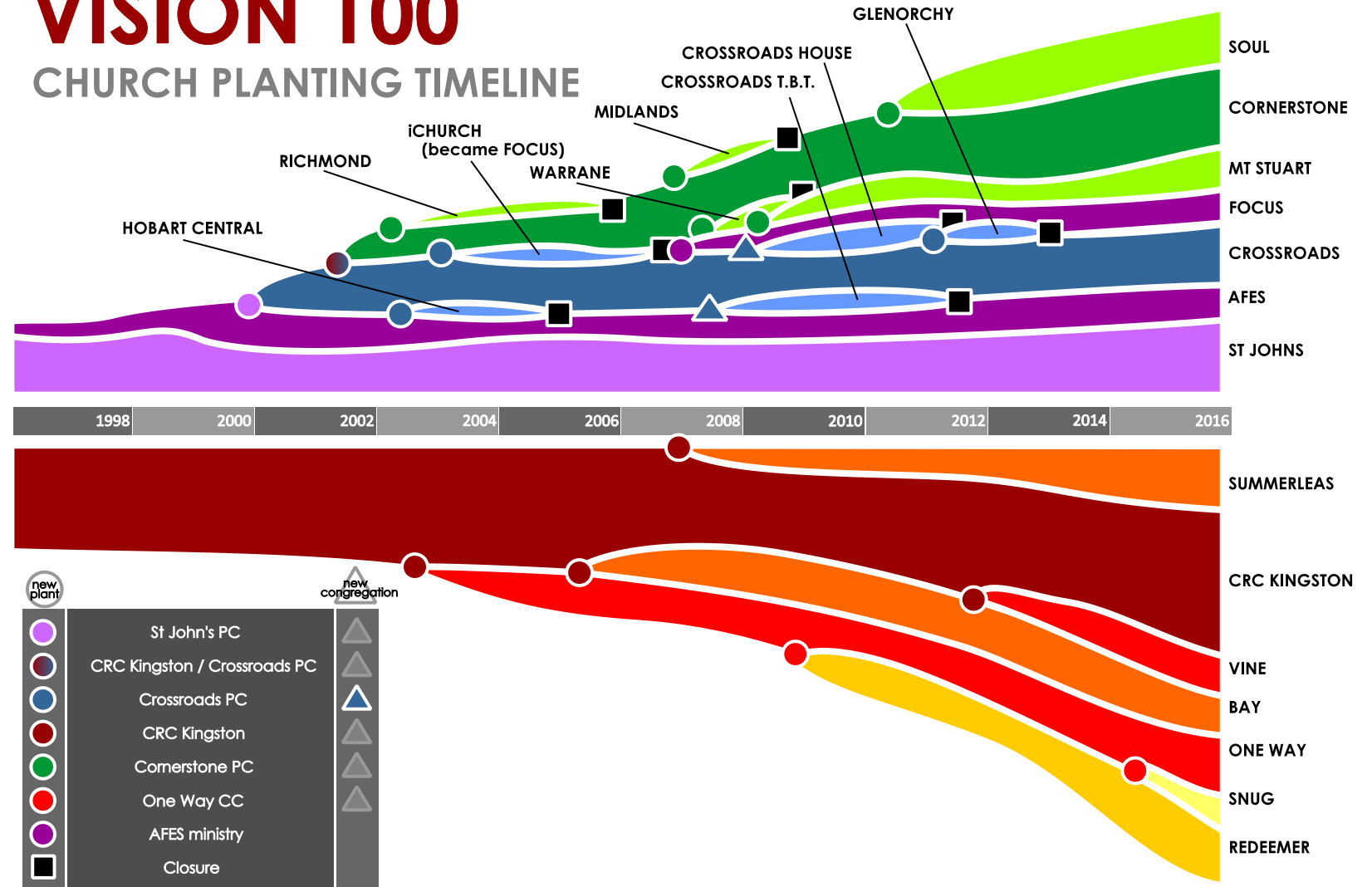
MULTISITE

CASE STUDY:

Vision100 network (KINGSTON, TAS)

VISION 100

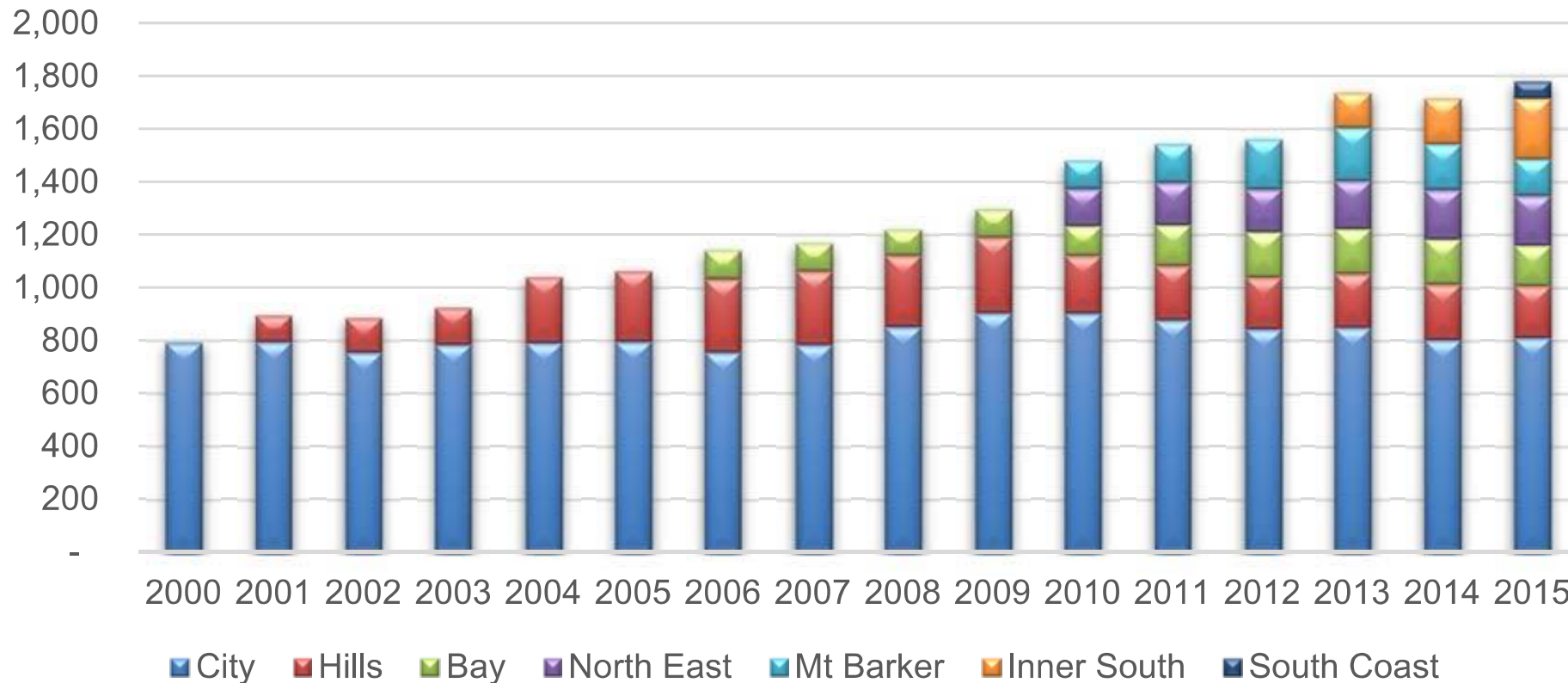
CHURCH PLANTING TIMELINE



MULTISITE

CASE STUDY: HOLY TRINITY NETWORK (ADELAIDE, SA)

Average Sunday Attendance per Week



MULTISITE

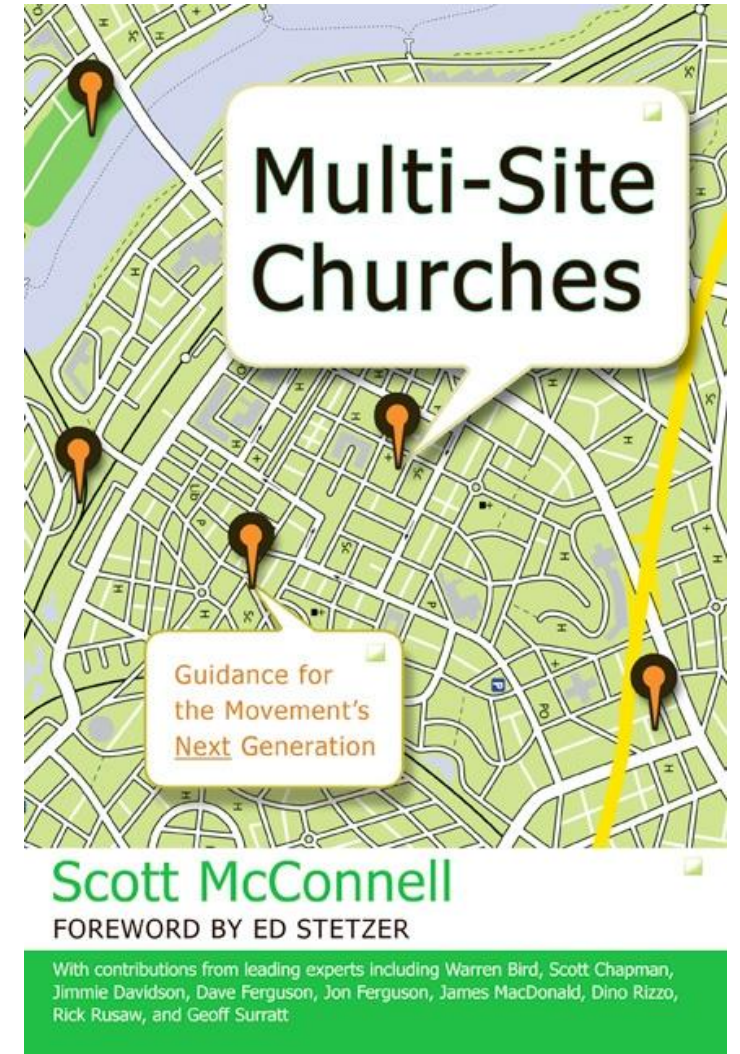
KEY RESOURCES

Multisite Churches

Scott McConnell

LifeWay Research conducted in-depth interviews with lead pastors, campus pastors and ministers responsible for multi-site ministry at their church

These included over 40 multi-site churches that represented a variety of sizes, denominations and locations across the country



MULTISITE

KEY RESOURCES

Geneva Push

www.genevapush.com/resources

scotts@genevapush.com

Leadnet

http://leadnet.org/category/multi-site_churches/

GENEVA
PUSH >>

Workshop 1 - “Witness”: the benefits of the purpose driven model

Richard Coekin

Gospel DNA

Replicating Effective Ministry

Afternoon Tea – 3:00pm
Back at 3:15pm

